

# Raise 3D Instructions Manual

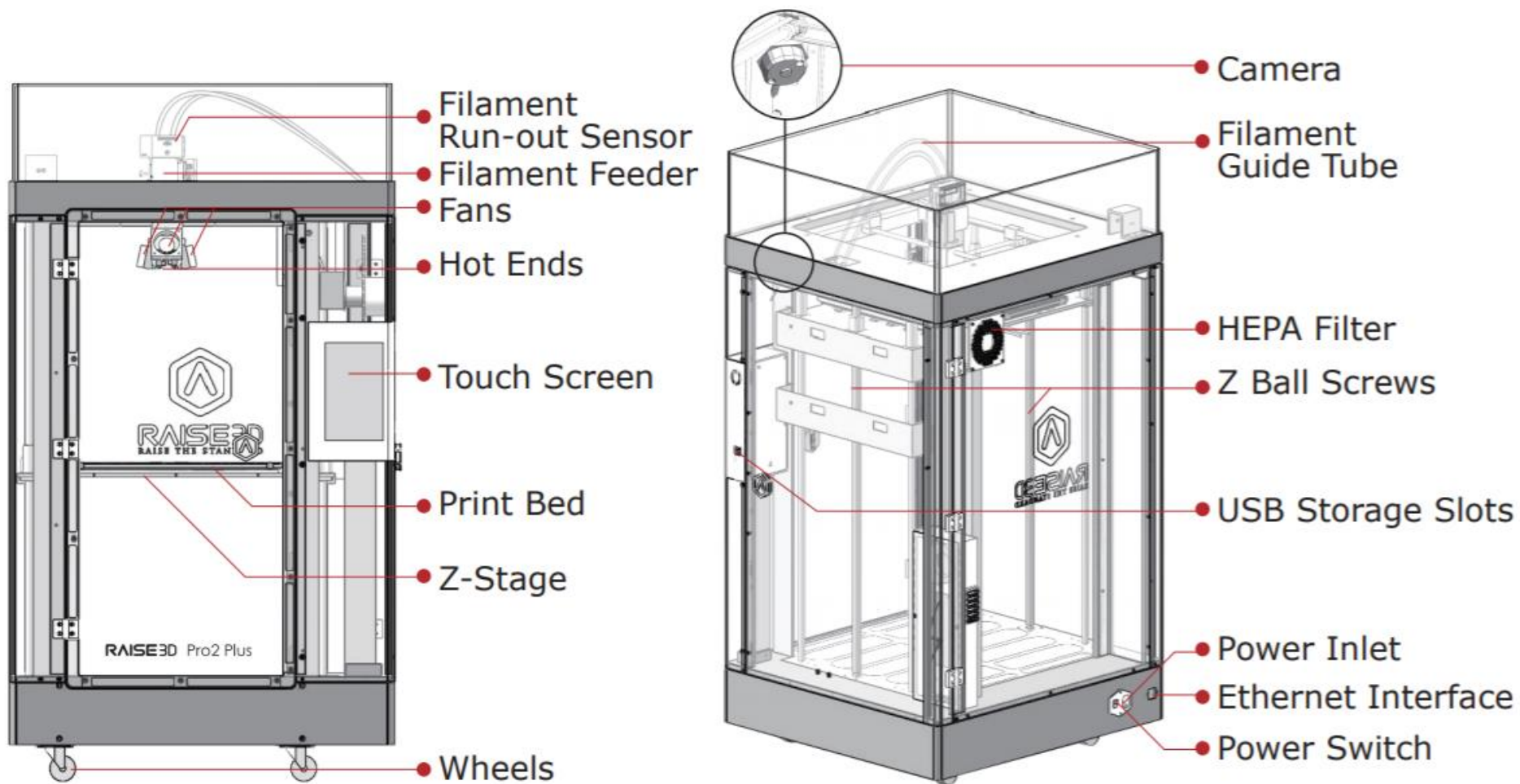
MAKERSPACE - CCNY



The City College  
of New York

The Grove School of Engineering

# Raise 3D Parts



# Download PreForm

- Download the IdeaMaker software in the following link: <https://www.raise3d.com/ideamaker/>

ideaMaker 4.0.1 stable versions. Please report to [help.raise3d.com](https://help.raise3d.com) if you encounter any problem.



**Windows**

Version 4.0.1  
Nov 23, 2020



**Mac**

Version 4.0.1  
Nov 23, 2020



**Linux 32-bit**

Version 4.0.1  
Nov 23, 2020  
.DEB | .ApplImage



**Linux 64-bit**

Version 4.0.1  
Nov 23, 2020  
.DEB | .ApplImage

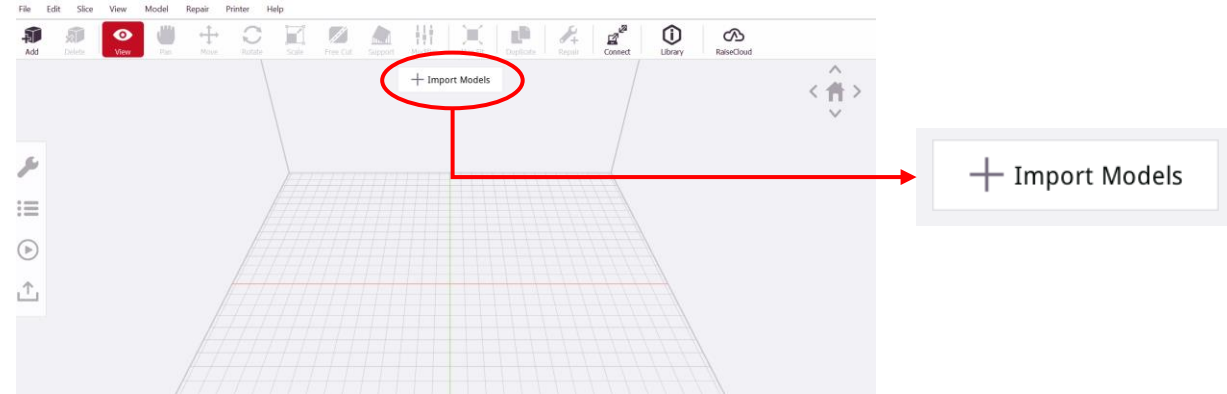
**Note:** Make sure to download the stable version

# Prepare File for Printing

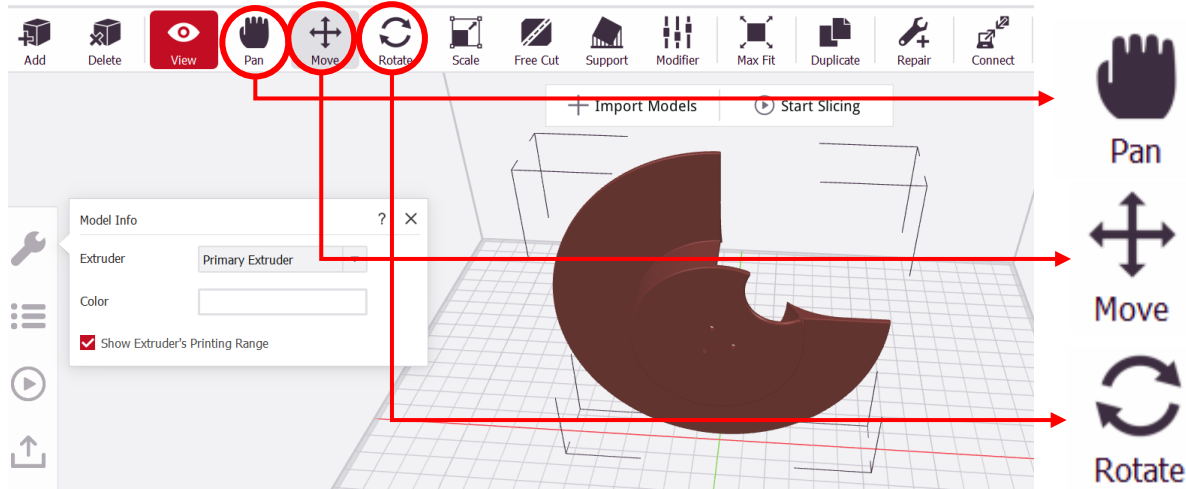
1. Open IdeaMaker.



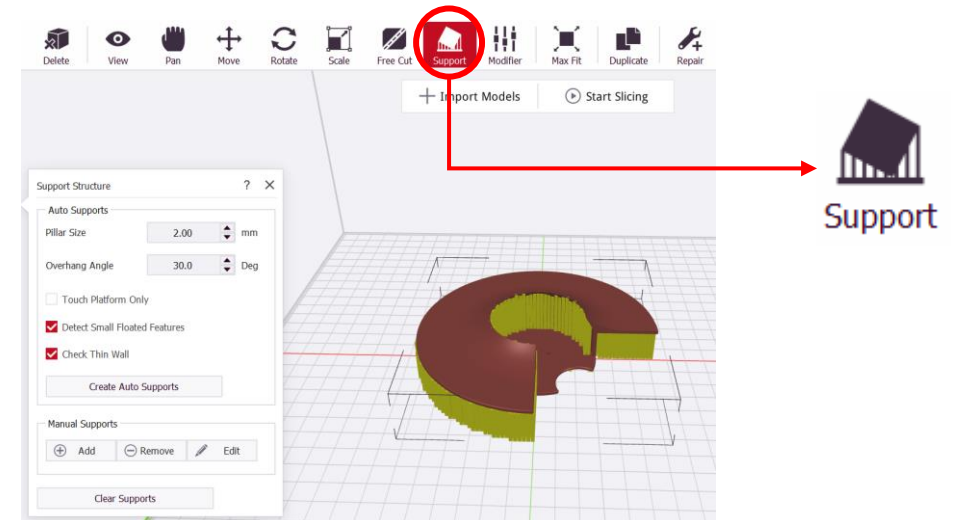
2. Click the button “+” to import .STL, .3MF or .OBJ files.



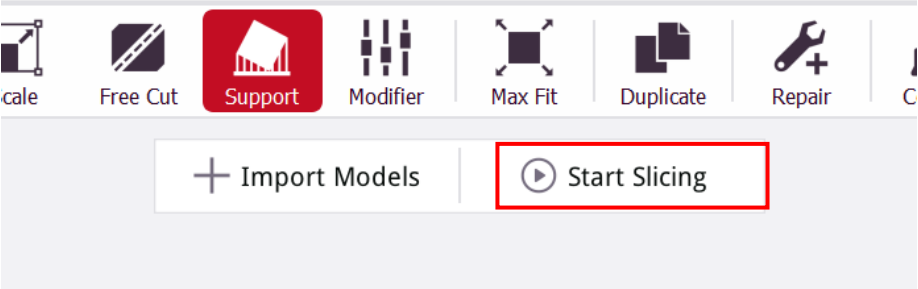
3. Use these tools to arrange the model on the build plate.



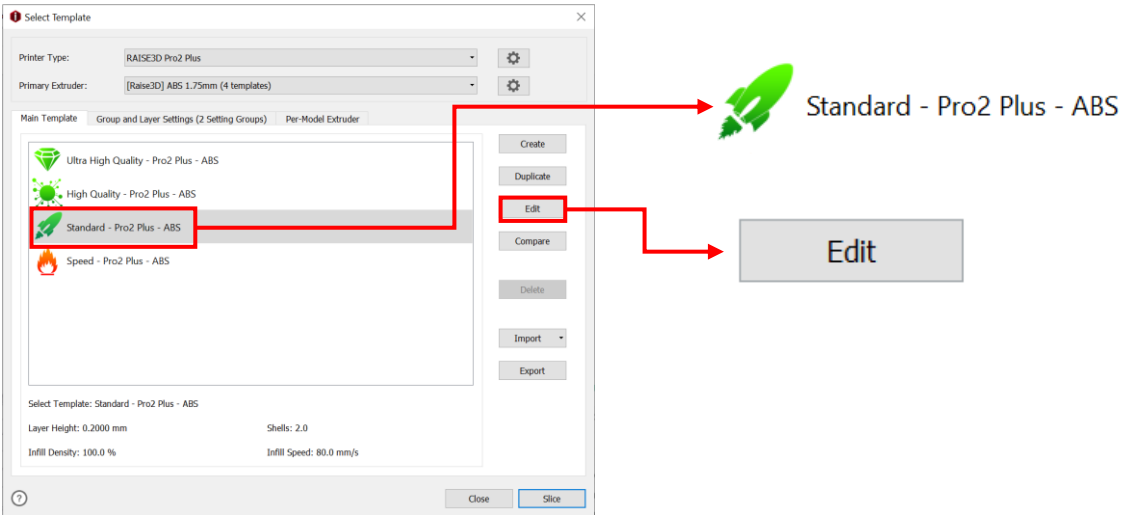
4. Click on the **Support** icon in the tool bar to create supports in the operation property zone.



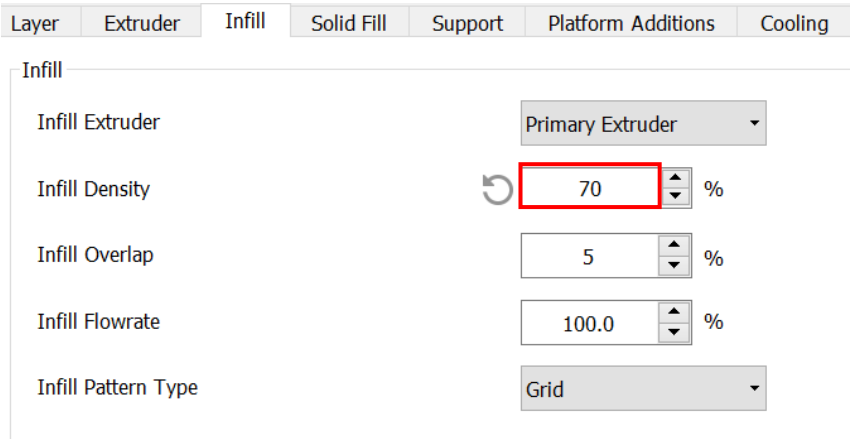
5. Slice the model by clicking **Start Slicing**



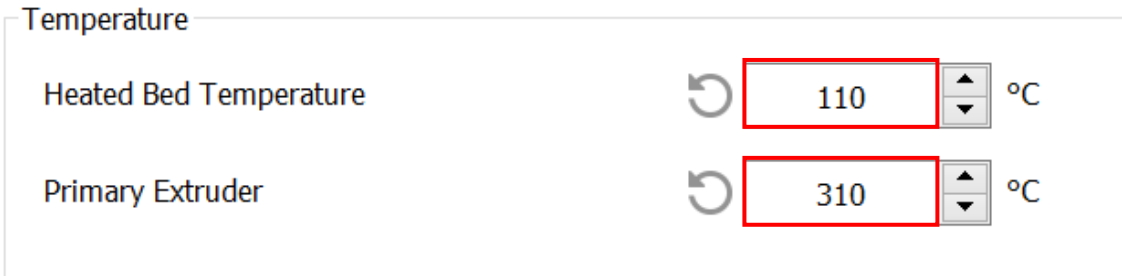
6. Select **Standard Quality** and then, click on **Edit** to change the infill and temperature



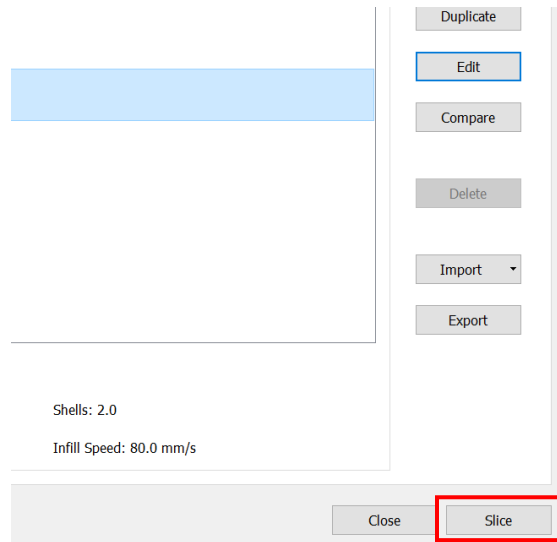
7. Adjust the **Infill Density** according to your needs.



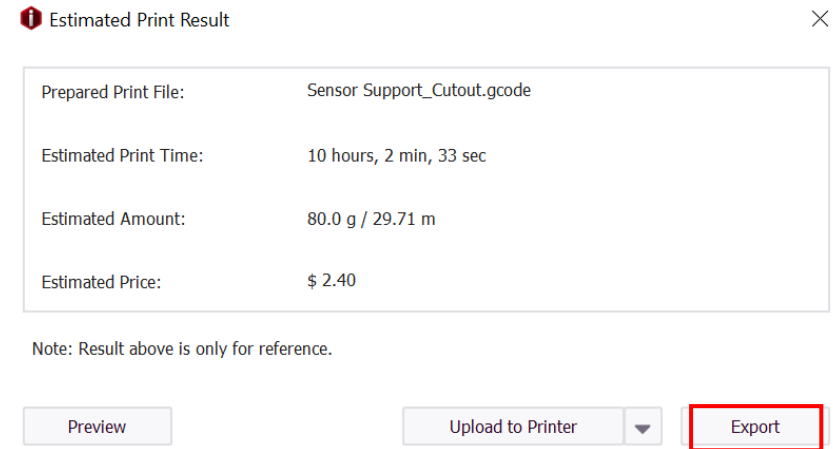
8. Click on the **Temperature** icon in the tool bar, and change the settings for Heated Bet Temperature and Primary Extruder to the following:



9. Click **Save** and then, **Slice**.



10. Next, **Export** the model and save it as a .gcode



11. Save the model onto a USB drive



**Note:** Save the model as .idea in case you need to edit it.

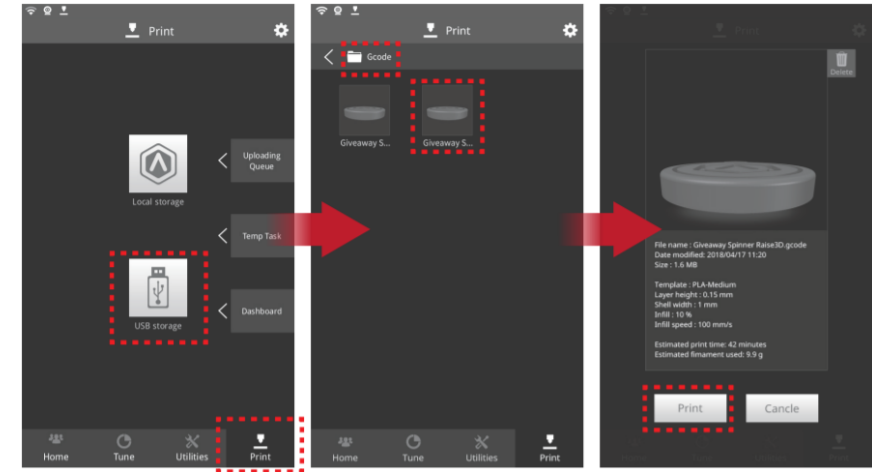


# Confirm Print on Printer

1. Insert the USB storage that contains your sliced model (.gcode files) into the USB slot on the side of touchscreen.



2. Select the "Print" tab, and choose "USB Storage". Select the file and press "Print" to start printing.



3. During printing, you can check the status of your print including printing time remaining and other parameters from the touchscreen in the "Home" interface.

